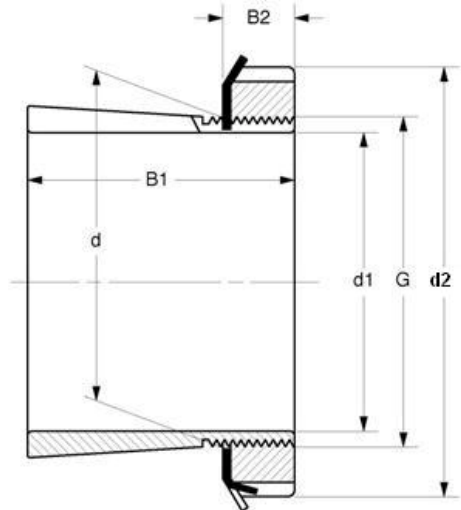


Adapter Sleeves 紧定套



Inch Shaft Size HA3000, HE3000, HS3000, HA2300, HE2300, HS2300, HA3100, HE3100, HS3100 Series

Bore Size=5 to 5-7/8"



MVB	Dimensions (mm)						Weight	Appertaining Device	
Item No.	d1 (in)	d	d2	B1	B2	G	(kg)	Lock Nut	Lock Washer
HE3028	5	140	165	82	24	M140x2	2.80	KML28	MBL28
HE3128		140	180	97	24	M140x2	3.85	KM28	MB28
HE3128L		140	165	97	24	M140x2	3.85	KML28	MBL28
HE2328		140	180	131	24	M140x2	4.95	KM28	MB28
HA3030	5-3/16	150	180	76	26	M150x2	4.70	KML30	MBL30
HA3130		150	195	111	26	M150x2	5.80	KM30	MB30
HA3130L		150	180	111	26	M150x2	5.80	KML30	MBL30
HA2330		150	195	139	26	M150x2	7.10	KM30	MB30
HE3030	5-1/4	150	180	87	26	M150x2	4.65	KML30	MBL30
HE3130L		150	180	111	26	M150x2	5.50	KML30	MBL30
HE3130		150	195	111	26	M150x2	5.50	KM30	MB30
HE2330		150	195	139	26	M150x2	6.80	KM30	MB30
HS3030	5-3/8	150	180	87	26	M150x2	4.65	KML30	MBL30
HS3130		150	195	111	26	M150x2	5.80	KM30	MB30
HS2330		150	195	139	26	M150x2	7.00	KM30	MB30
HA3032	5-7/16	160	190	93	28	M160x3	5.20	KML32	MBL32
HA3132		160	210	119	28	M160x3	7.55	KM32	MB32
HA3132L		160	190	119	28	M160x3	7.55	KML32	MBL32
HA2332		160	210	147	28	M160x3	8.80	KM32	MB32
HA2332L		160	190	147	28	M160x3	8.80	KML32	MBL32
HE3032	5-1/2	160	190	93	28	M160x3	5.10	KML32	MBL32
HE3132L		160	190	119	28	M160x3	7.30	KML32	MBL32
HE3132		160	210	119	28	M160x3	7.30	KM32	MB32
HE2332L		160	190	147	28	M160x3	8.80	KM32	MB32
HE2332		160	210	147	28	M160x3	8.80	KML32	MBL32
HS3034	5-7/8	170	200	101	29	M170x3	5.40	KML34	MBL34
HS3134		170	220	122	29	M170x3	7.55	KM34	MB34
HS2334		170	220	154	29	M170x3	9.20	KM34	MB34