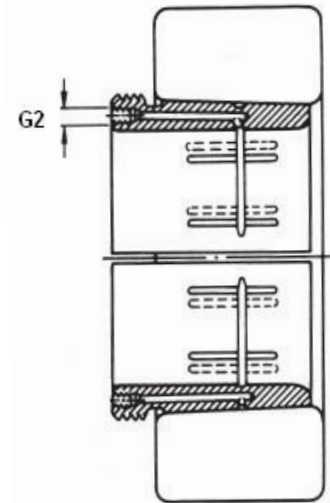
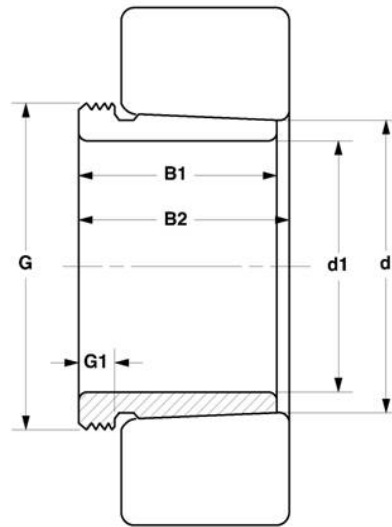


# Hydraulic Withdrawal Sleeves 退卸套

## AH, AHX, AOH Series



Bore Size=200 to 220mm



AOH

MVB	Dimensions (mm)							Weight	Appertaining
Item No.	d <sub>1</sub>	d	B <sub>1</sub>	B <sub>2</sub>	G	G <sub>1</sub>	G <sub>2</sub>	(kg)	Lock Nut
AH244	200	220	85	91	Tr235x4	18	-	6.10	HML47
AH2244	200	220	130	136	Tr240x4	20	-	9.10	HM48
AOH2244	200	220	130	136	Tr240x4	20	G1/4	9.10	HM48
AH2344	200	220	181	189	Tr240x4	30	-	13.50	HM48
AHO2344	200	220	181	189	Tr240x4	30	G1/4	13.50	HM48
AH3044	200	220	111	117	Tr235x4	20	-	7.40	HML47
AOH3044	200	220	111	117	Tr235x4	20	G1/4	7.40	HML47
AH3144	200	220	145	151	Tr240x4	23	-	9.30	HM48
AOH3144	200	220	145	151	Tr240x4	23	G1/4	9.30	HM48
AH24044	200	220	138	152	Tr230x4	20	-	8.20	HM46
AOH24044	200	220	138	152	Tr230x4	20	G1/4	8.20	HM46
AH24144	200	220	170	184	Tr230x4	20	-	10.00	HM46
AOH24144	200	220	170	184	Tr230x4	20	G1/4	10.00	HM46
AH248	220	240	96	102	Tr260x4	22	-	8.16	HML52
AH2248	220	240	144	150	Tr260x4	21	-	11.10	HM52
AOH2248	220	240	144	150	Tr260x4	21	G1/4	11.10	HM52
AH2348	220	240	189	197	Tr260x4	30	-	14.00	HM52
AOH2348	220	240	189	197	Tr260x4	30	G/4	14.00	HM52
AH3048	220	240	116	123	Tr260x4	21	-	7.95	HML52
AOH3048	220	240	116	123	Tr260x4	21	G1/4	7.95	HML52
AH3148	220	240	154	161	Tr260x4	25	-	12.00	HM52
AOH3148	220	240	154	161	Tr260x4	25	G1/4	12.00	HM52
AH24048	220	240	138	153	Tr260x4	20	-	8.05	HM50
AOH24048	220	240	138	153	Tr260x4	20	G1/4	8.05	HM50
AH24148	220	240	180	195	Tr260x4	20	-	11.50	HM52
AOH24148	220	240	180	195	Tr260x4	20	G1/4	11.50	HM52