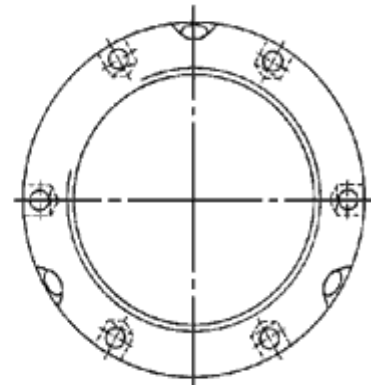
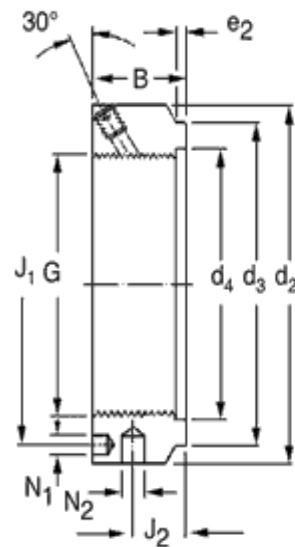


Precision Lock Nut With Locking Pin

KMTA Series



Thread Size
G=M25x1.5~Tr200x3



Part Number	Dimensions (mm)											Static Axial Load Carrying Capacity Kn	Grub Screws		Nut Loosening Torque Nm	Mass Kg
	KMTA	G	d2	d3	d4	B	J1	J2	N1	N2	e1		e2	Size		
KMTA5	M25x1.5	42	35	26	20	32.5	11	4.3	4	2	2	130	M6	8	45	0.13
KMTA6	M30x1.5	48	40	32	20	40.5	11	4.3	5	2	2	160	M6	8	55	0.16
KMTA7	M35x1.5	53	47	38	20	45.5	11	4.3	5	3	3	190	M6	8	65	0.19
KMTA8	M40x1.5	58	52	42	22	50.5	12	4.3	5	3	3	210	M6	8	80	0.23
KMTA9	M45x1.5	68	58	48	22	58	12	4.3	6	3	3	240	M6	8	95	0.33
KMTA10	M50x1.5	70	63	52	24	61.5	13	4.3	6	4	4	300	M6	8	115	0.34
KMTA11	M55x1.5	75	70	58	24	66.5	13	4.3	6	4	4	340	M6	8	135	0.37
KMTA12	M60x1.5	84	75	62	24	74.5	13	5.3	6	4	4	380	M6	8	150	0.49
KMTA13	M65x1.5	88	80	68	25	78.5	13	5.3	6	4	4	460	M6	8	170	0.52
KMTA14	M70x1.5	95	86	72	26	85	14	5.3	8	4	4	490	M8	18	285	0.62
KMTA15	M75x1.5	100	91	77	26	88	13	6.4	8	4	4	520	M8	18	305	0.66
KMTA16	M80x2	110	97	83	30	95	16	6.4	8	5	4	620	M8	18	325	1
KMTA17	M85x2	115	102	88	32	100	17	6.4	8	5	4	650	M10	35	660	1.15
KMTA18	M90x2	120	110	93	32	108	17	6.4	8	5	5	680	M10	35	720	1.2
KMTA19	M95x2	125	114	98	32	113	17	6.4	8	5	5	710	M10	35	780	1.25
KMTA20	M100x2	130	120	103	32	118	17.5	6.4	8	5	5	740	M10	35	840	1.3
KMTA22	M110x2	140	132	112	32	128	17	6.4	8	5	5	800	M10	35	960	1.45
KMTA24	M120x2	155	142	122	32	140	17	6.4	8	5	5	860	M10	35	1080	1.85
KMTA26	M130x3	165	156	132	32	153	17	6.4	8	5	5	920	M10	35	1200	2
KMTA28	M140x3	180	166	142	32	165	17	6.4	10	5	5	980	M10	35	1320	2.45
KMTA30	M150x3	190	180	152	32	175	17	6.4	10	5	5	1040	M10	35	1440	2.6
KMTA32	M160x3	205	190	162	32	185	17	8.4	10	5	5	1100	M10	35	1600	3.15
KMTA34	M170x3	215	205	172	32	195	17	8.4	10	5	5	1160	M10	35	1750	3.3
KMTA36	M180x3	230	215	182	32	210	17	8.4	10	5	5	1220	M10	35	1900	3.9
KMTA38	M190x3	240	225	192	32	224	17	8.4	10	5	5	1280	M10	35	2050	4.1
KMTA40	M200x3	245	237	202	32	229	17	8.4	12	5	5	1340	M10	35	2200	3.85